

PREPARED FOR:

**SUNVEST**  
SOLAR LLC®  
330 W. State Street, Suite 1  
Geneva, IL 60134

REVISIONS:		
#	DATE	COMMENT

# Wilson School Solar Project

## Kane County, Illinois

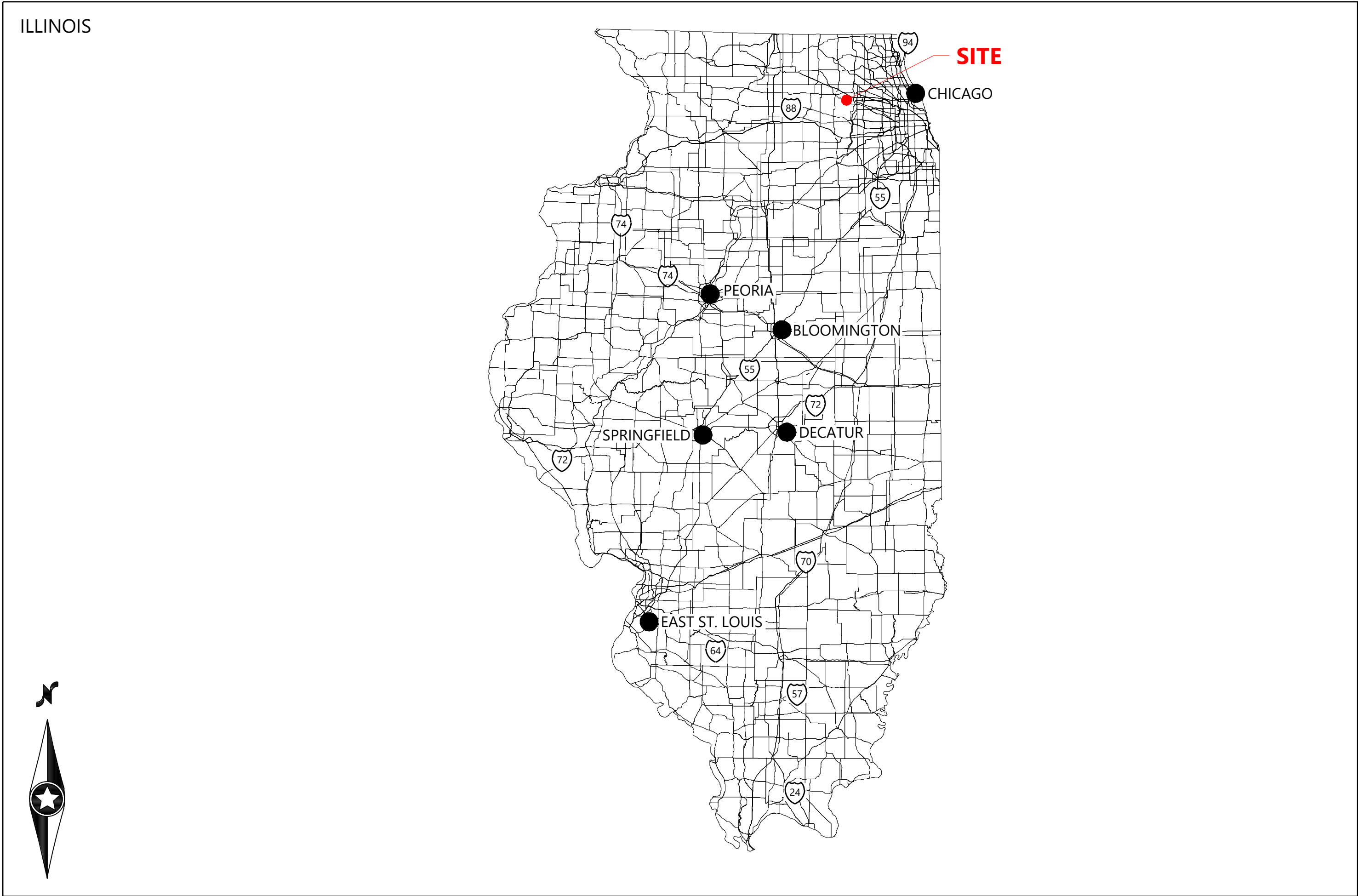
# ALTA/NSPS LAND TITLE SURVEY

## GENERAL DRAWINGS

DWG NO.		TITLE
SHEET	1	COVER SHEET
SHEET	2	GENERAL NOTES AND LEGAL
SHEET	3	DETAIL SHEETS (NON-CONTOUR)
SHEET	4	DETAIL SHEETS (CONTOUR)

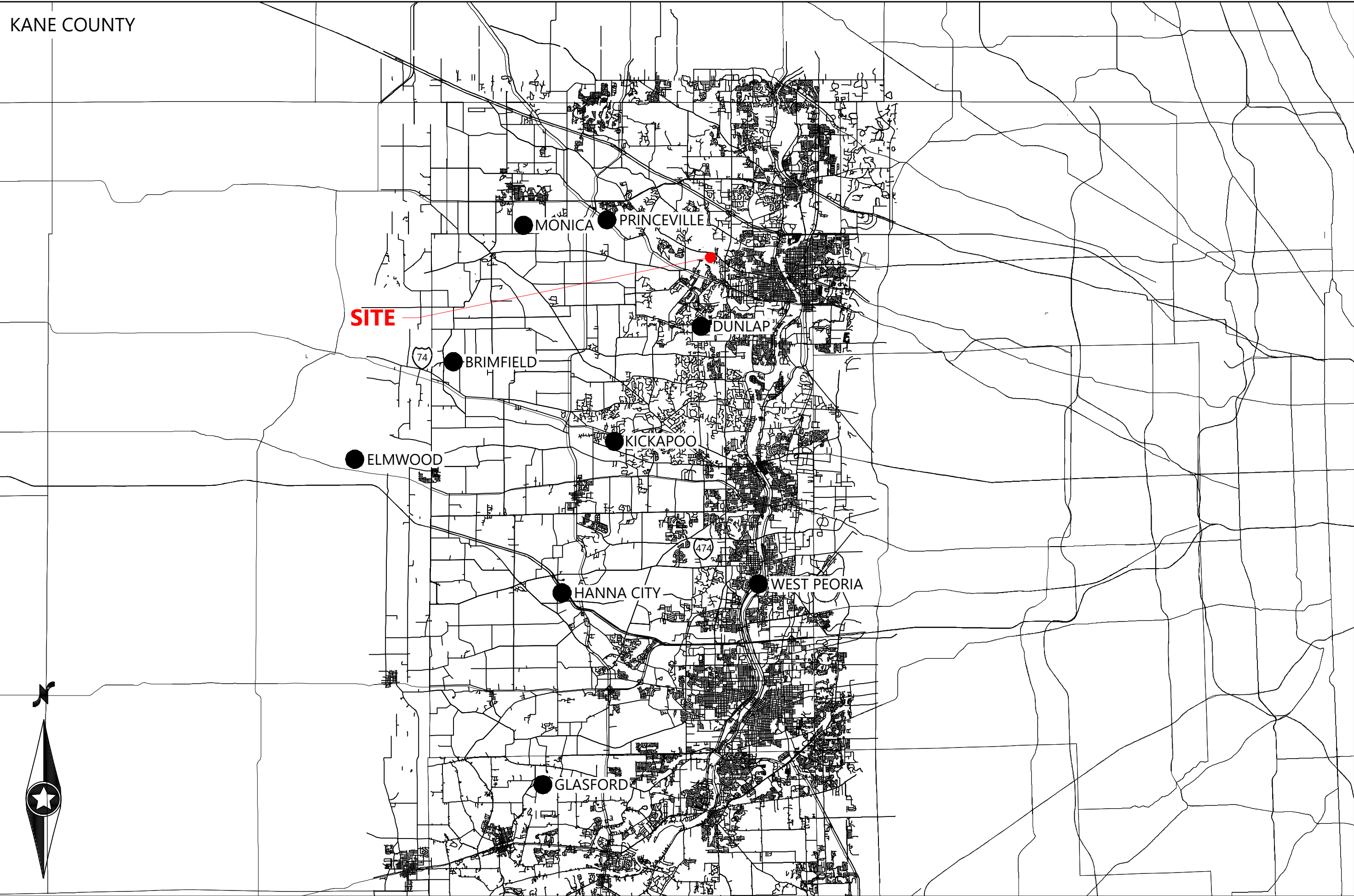
REGIONAL MAP

\*NOT TO SCALE



VICINITY MAP

\*NOT TO SCALE



**WILSON SCHOOL  
SOLAR PROJECT**  
Kane County, IL

### CERTIFICATION

TO: SUNVEST SOLAR, LLC, AND CHICAGO TITLE INSURANCE COMPANY

THIS IS TO CERTIFY THAT THIS MAP OR PLAT AND THE SURVEY ON WHICH IT IS BASED WERE MADE IN ACCORDANCE WITH THE 2021 MINIMUM STANDARD DETAIL REQUIREMENTS FOR ALTA/NSPS LAND TITLE SURVEYS, JOINTLY ESTABLISHED AND ADOPTED BY ALTA AND NSPS, AND INCLUDES TABLE A OPTIONAL ITEMS 1, 2, 3, 4, 6(A), 6(B), 7(I), 8, 31(a), 13, 14, 15, 16, 17, 18, 19, AND 20. FIELD WORK COMPLETED ON 06/06/2025. THIS PROFESSIONAL SERVICE CONFORMS TO THE ILLINOIS MINIMUM STANDARD FOR AN ALTA AND TOPOGRAPHIC SURVEY.

**DRAFT**

GREGORY BRYAN BOWERS, LS  
ILLINOIS LICENSE NO. 035.004113  
GREG.BOWERS@WESTWOODPS.COM

DATE  
EXPIRATION 11/30/2026

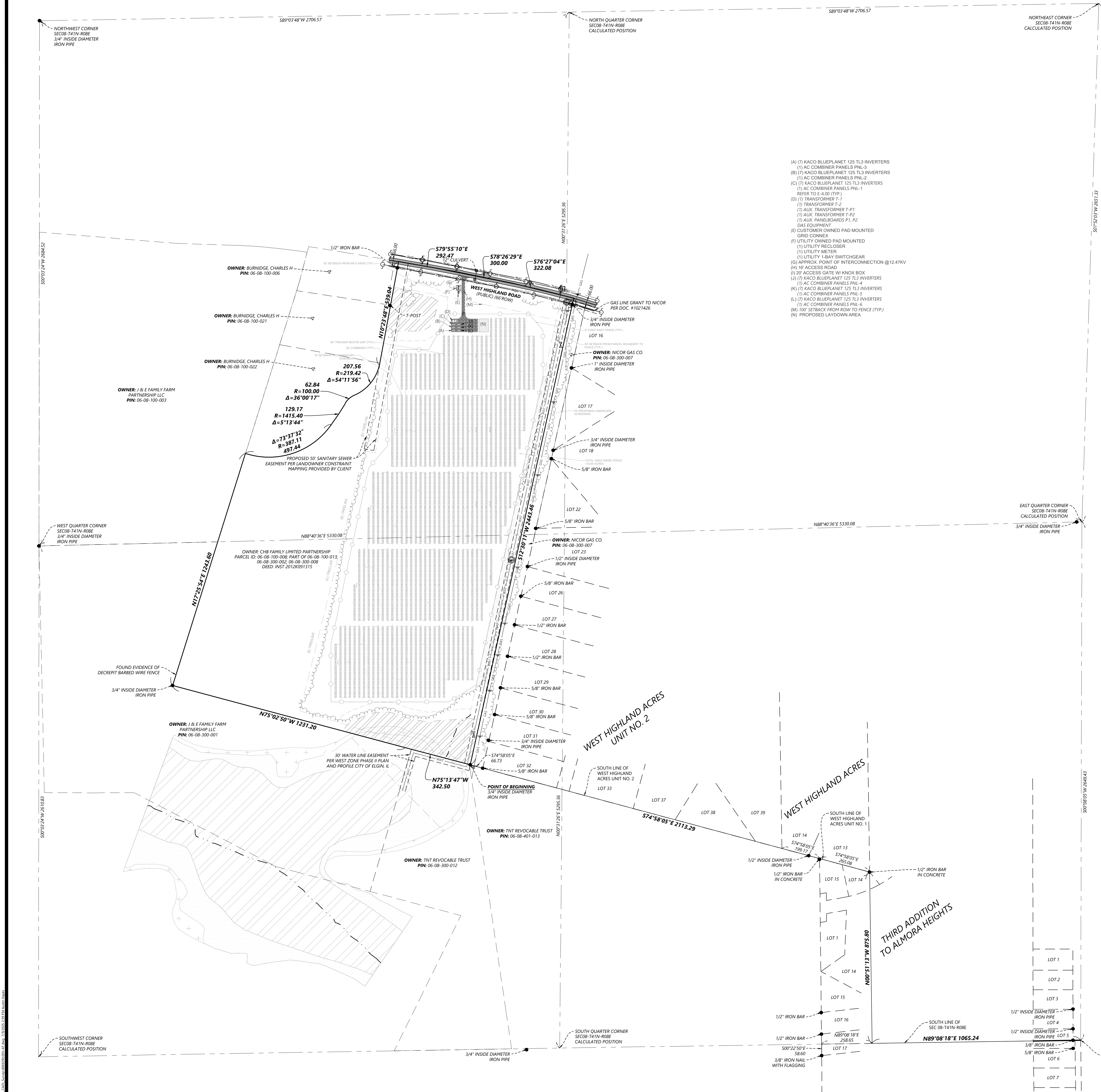
### COVER SHEET

ALTA/NSPS  
LAND TITLE SURVEY  
PROJECT  
NUMBER: 0069290.00  
DATE: 07/09/2025  
SHEET: 1 of 4









- (A) (7) KACO BLUEPLANET 125 TL3 INVERTERS  
(1) AC COMBINER PANELS PNL-3  
(B) (7) KACO BLUEPLANET 125 TL3 INVERTERS  
(1) AC COMBINER PANELS PNL-2  
(C) (7) KACO BLUEPLANET 125 TL3 INVERTERS  
(1) AC COMBINER PANELS PNL-1  
REFER TO E-400 (TYP.)  
(D) (1) TRANSFORMER T-1  
(1) TRANSFORMER T-2  
(1) AUX. TRANSFORMER T-P1  
(1) AUX. TRANSFORMER T-P2  
(1) AUX. PANELBOARDS P1, P2  
GAS EQUIPMENT  
(E) CUSTOMER OWNED PAD MOUNTED  
GRID CONNEX  
(F) UTILITY OWNED PAD MOUNTED  
(1) UTILITY RECLOSER  
(1) UTILITY METER  
(1) UTILITY 1-BAY SWITCHGEAR  
(G) APPROX. POINT OF INTERCONNECTION @ 12.47KV  
(H) 16' ACCESS ROAD  
(I) 20' ACCESS GATE W/ KNOX BOX  
(J) (7) KACO BLUEPLANET 125 TL3 INVERTERS  
(1) AC COMBINER PANELS PNL-4  
(K) (7) KACO BLUEPLANET 125 TL3 INVERTERS  
(1) AC COMBINER PANELS PNL-5  
(L) (7) KACO BLUEPLANET 125 TL3 INVERTERS  
(1) AC COMBINER PANELS PNL-6  
(M) 100' SETBACK FROM ROW TO FENCE (TYP.)  
(N) PROPOSED LAYDOWN AREA

PREPARED FOR:

**SUNVEST**  
SOLAR LLC®  
330 W. State Street, Suite 1  
Geneva, IL 60134

REVISIONS:

#	DATE	COMMENT

- LEGEND:**
- CULVERT
  - ⊗ GATE VALVE
  - ⊙ WATER MANHOLE
  - ⊞ ELECTRIC BOX
  - ⊞ POWER POLE
  - FOUND MONUMENT (SEE LABEL)
  - SIGN
  - GAS LINE
  - POWER OVERHEAD
  - WATERMAIN
  - TELEPHONE LINE
  - CENTERLINE OF CREEK
  - EXISTING FENCE LINE
  - BOUNDARY LINE
  - ADJOINER PROPERTY LINE
  - RIGHT-OF-WAY LINE
  - EASEMENT LINE
  - SECTION LINE
  - TREE LINE
  - BITUMINOUS SURFACE
  - FEMA ZONE "X"
  - FEMA ZONE "X" (1% ANNUAL FLOOD CHANCE)
  - FEMA FLOODWAY AREA IN ZONE "AE"
  - DELINEATED WETLAND
  - PROPOSED SOLAR PANELS
  - PROPOSED FENCE LINE
  - PROPOSED GRAVEL DRIVE
  - PROPOSED POWER OVERHEAD
  - PROFESSIONAL LAND SURVEYOR
  - CORPORATION
  - WITH
  - ALUMINUM
  - MEASURED
  - RECORD
  - POINT OF BEGINNING
  - POINT OF COMMENCEMENT
  - PARCEL ID

**WILSON SCHOOL  
SOLAR PROJECT**  
Kane County, IL

DETAIL SHEET  
(NON CONTOUR)

ALTA/NSPS  
LAND TITLE SURVEY

PROJECT  
NUMBER: 0069290.00

DATE: 07/09/2025

SHEET: 3 of 4



PREPARED FOR:

**SUNVEST**  
SOLAR LLC®  
330 W. State Street, Suite 1  
Geneva, IL 60134

REVISIONS:  
# DATE COMMENT

LEGEND:

- CULVERT
- ⊗ GATE VALVE
- ⊕ WATER MANHOLE
- ⊞ ELECTRIC BOX
- ⊟ POWER POLE
- FOUND MONUMENT (SEE LABEL)
- ⊞ SIGN
- GAS — GAS LINE
- POH — POWER OVERHEAD
- WAT — WATERMAIN
- TUG — TELEPHONE LINE
- — CENTERLINE OF CREEK
- — EXISTING FENCE LINE
- — BOUNDARY LINE
- — ADJOINER PROPERTY LINE
- — RIGHT-OF-WAY LINE
- — EASEMENT LINE
- — SECTION LINE
- — TREE LINE
- 123 — MAJOR CONTOUR LINE
- 123 — MAJOR CONTOUR LINE
- BITUMINOUS SURFACE
- FEMA ZONE "X"
- FEMA ZONE "X" (1% ANNUAL FLOOD CHANCE)
- FEMA FLOODWAY AREA IN ZONE "AE"
- DELINEATED WETLAND
- PROPOSED SOLAR PANELS
- PROPOSED FENCE LINE
- PROPOSED GRAVEL DRIVE
- PROPOSED POWER OVERHEAD
- PLS PROFESSIONAL LAND SURVEYOR
- CORP CORPORATION
- WI WITH
- ALUM ALUMINUM
- M MEASURED
- R RECORD
- POB POINT OF BEGINNING
- POC POINT OF COMMENCEMENT
- PID PARCEL ID

WILSON SCHOOL  
SOLAR PROJECT  
Kane County, IL

DETAIL SHEET  
(CONTOUR)

ALTA/NSPS  
LAND TITLE SURVEY  
PROJECT NUMBER: 0069290.00

DATE: 07/09/2025

SHEET: 4 of 4

